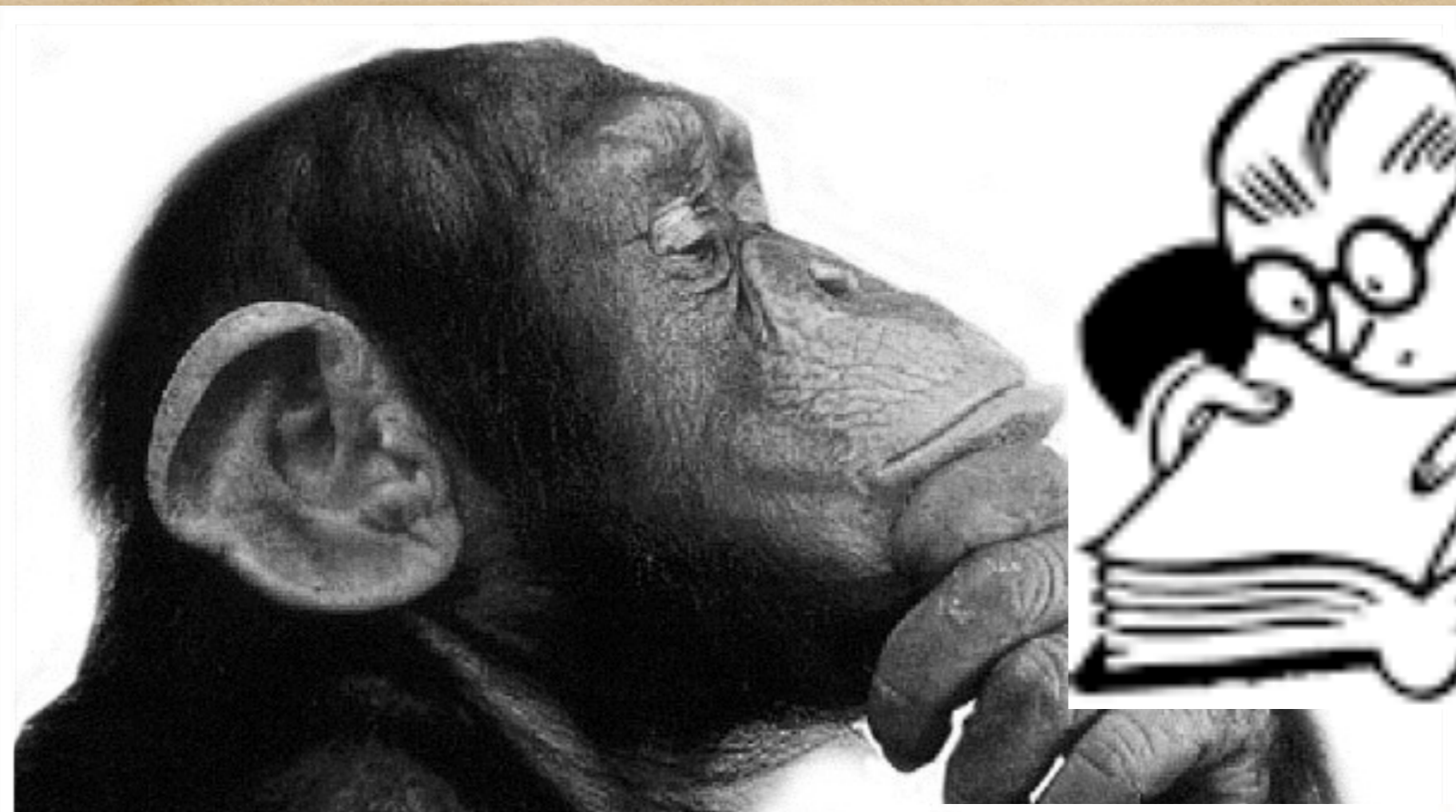


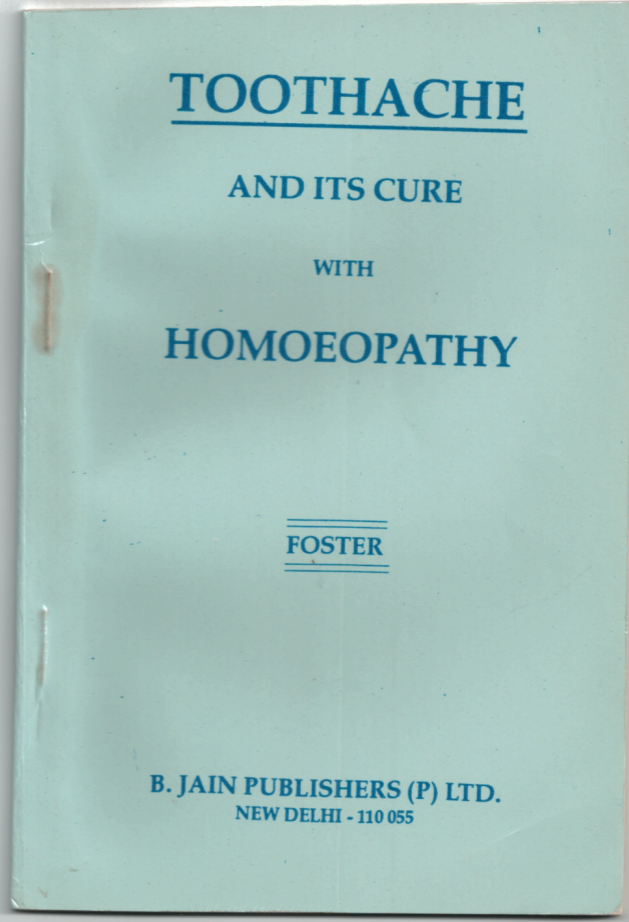
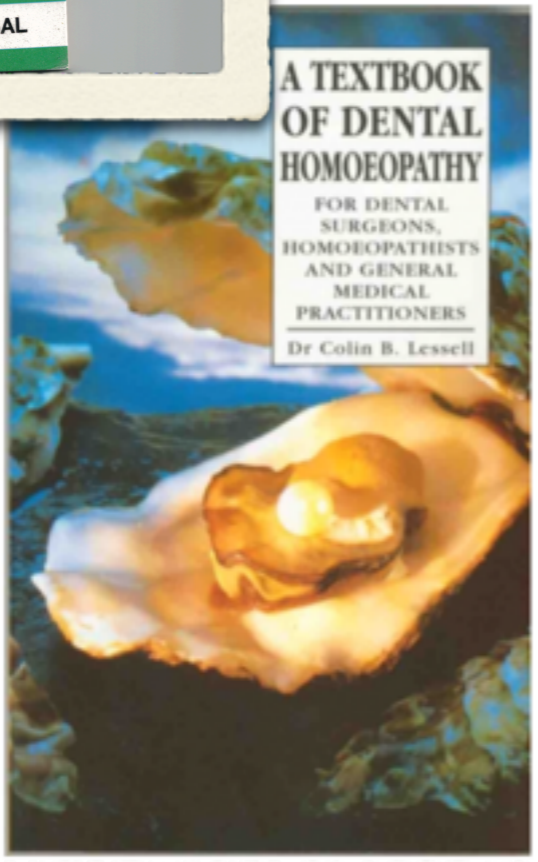
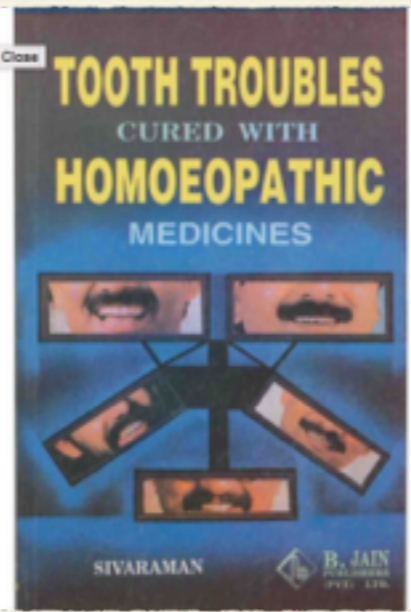
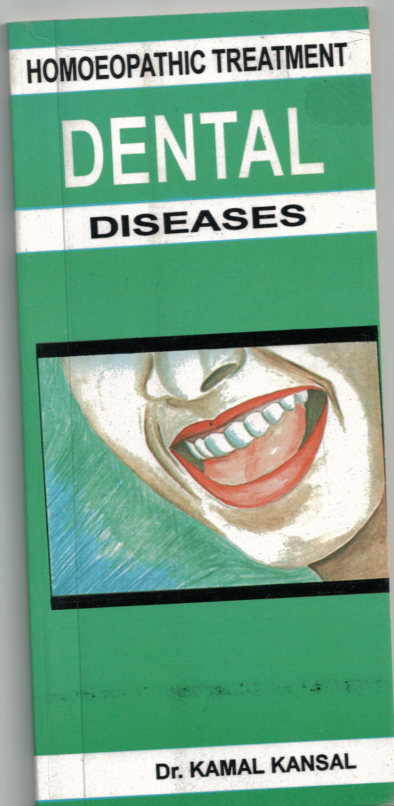
Dr Gary Fortinsky DDS, FCAH, CCH

Homeopathy in Dental Practice:

A Toothsome Amalgam of Treatment Options

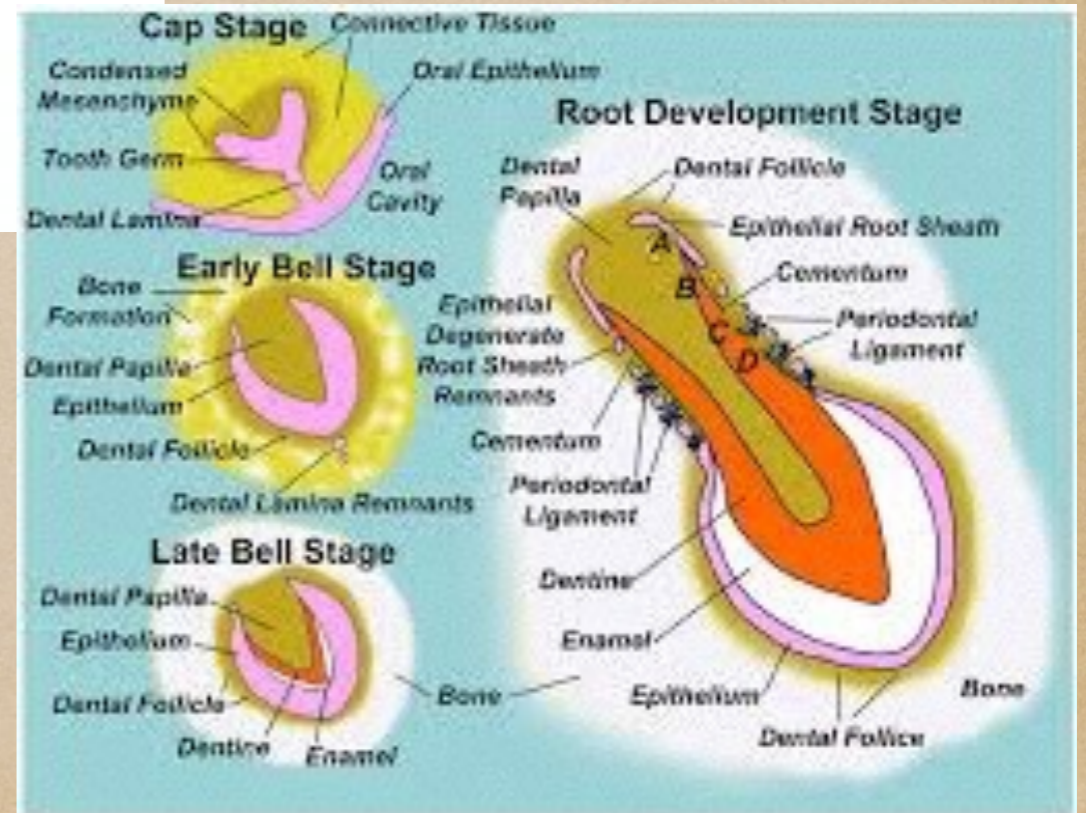
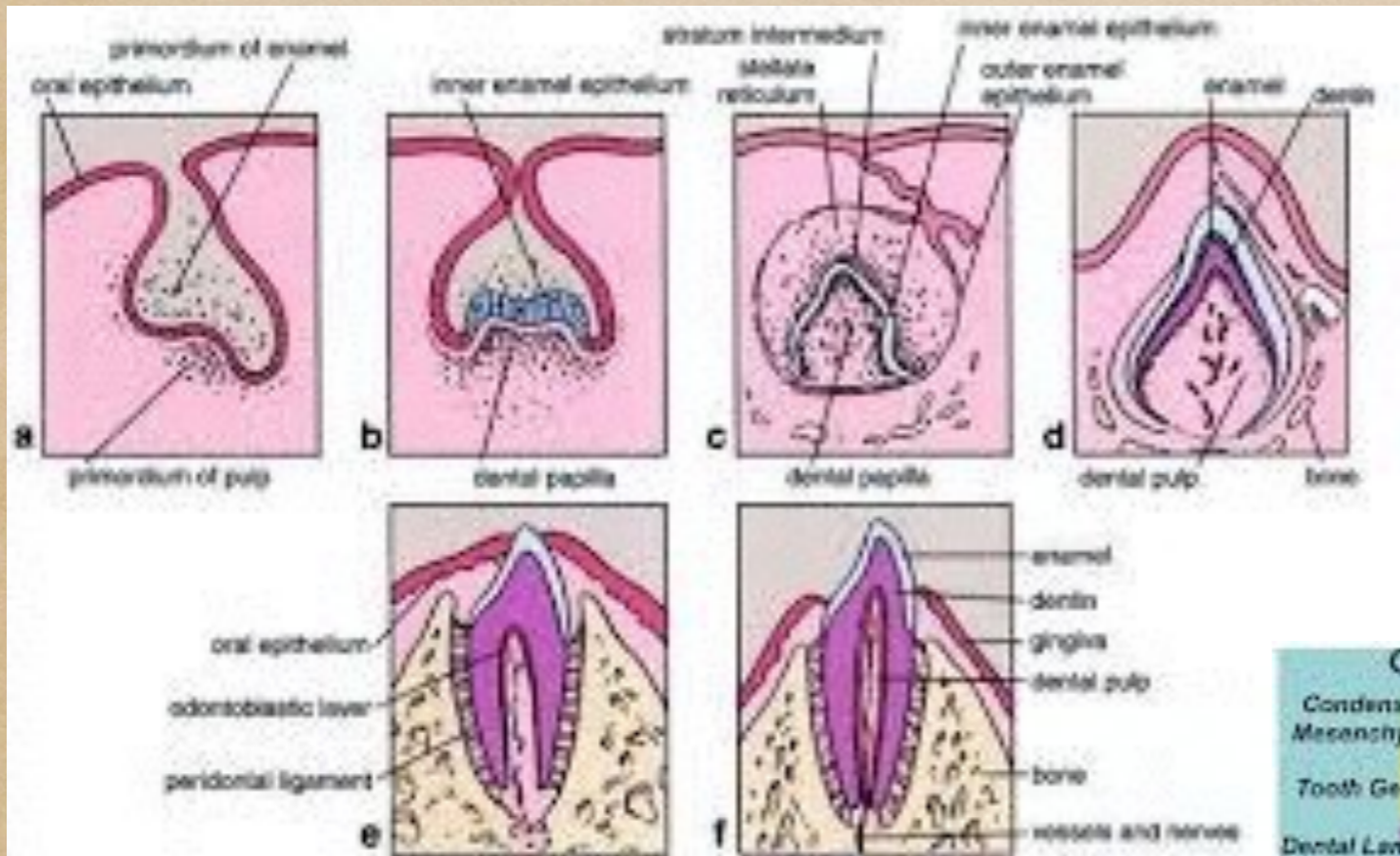









Tooth Development In The Jaw





Slow Tooth Eruption

Complete 4.5 Repertory


TEETH

+ DENTITION (0)


slow (19): aster., bac., **Calc.**, calc-f., **Calc-p.**, ferr., fl-ac., mag-c., mag-m., mag-p., merc., nep., phos., **Sil.**, sulfa., sulph., thuj., tub., zinc.

Here's a list of teething symptoms:

- Drooling
- Irritability
- A tooth visible below the gum
- Swollen, bulging gums
- Trying to bite, chew, and suck on everything she can get her hands on
- Rubbing her face
- Difficulty sleeping
- Turning away food
- Grabbing her ears

Teething

Complete 4.5 Repertory

 TEETH

+ DENTITION (0)

* difficult (GENERALITIES; Dentition; difficult) (85): acon., aeth., agar., am-c., ant-c., ant-t., apis, arn., ars., arund., bell., bism., bor., bry., **Calc.**, calc-f., canth., caust., **Cham.**, cheir., chlol., chlor., cic., cimid., cina, coff., colch., coloc., cupr., cypr., dol., dulc., ferr., ferr-p., gels., graph., hecla., hell., hep., hyos., ign., ip., kali-br., kreos., lyc., mag-c., mag-m., mag-p., meli., merc., merc-c., mill., nat-m., nit-ac., nux-m., nux-v., op., passi., phys., phyt., plat., plect., podo., psor., puls., rheum, rhus-t., scut., sec., sep., **Sil.**, sol-n., stann., **Staph.**, stram., sul-ac., sulph., syph., ter., til., tub., tub-k., verat., zinc., zinc-br.

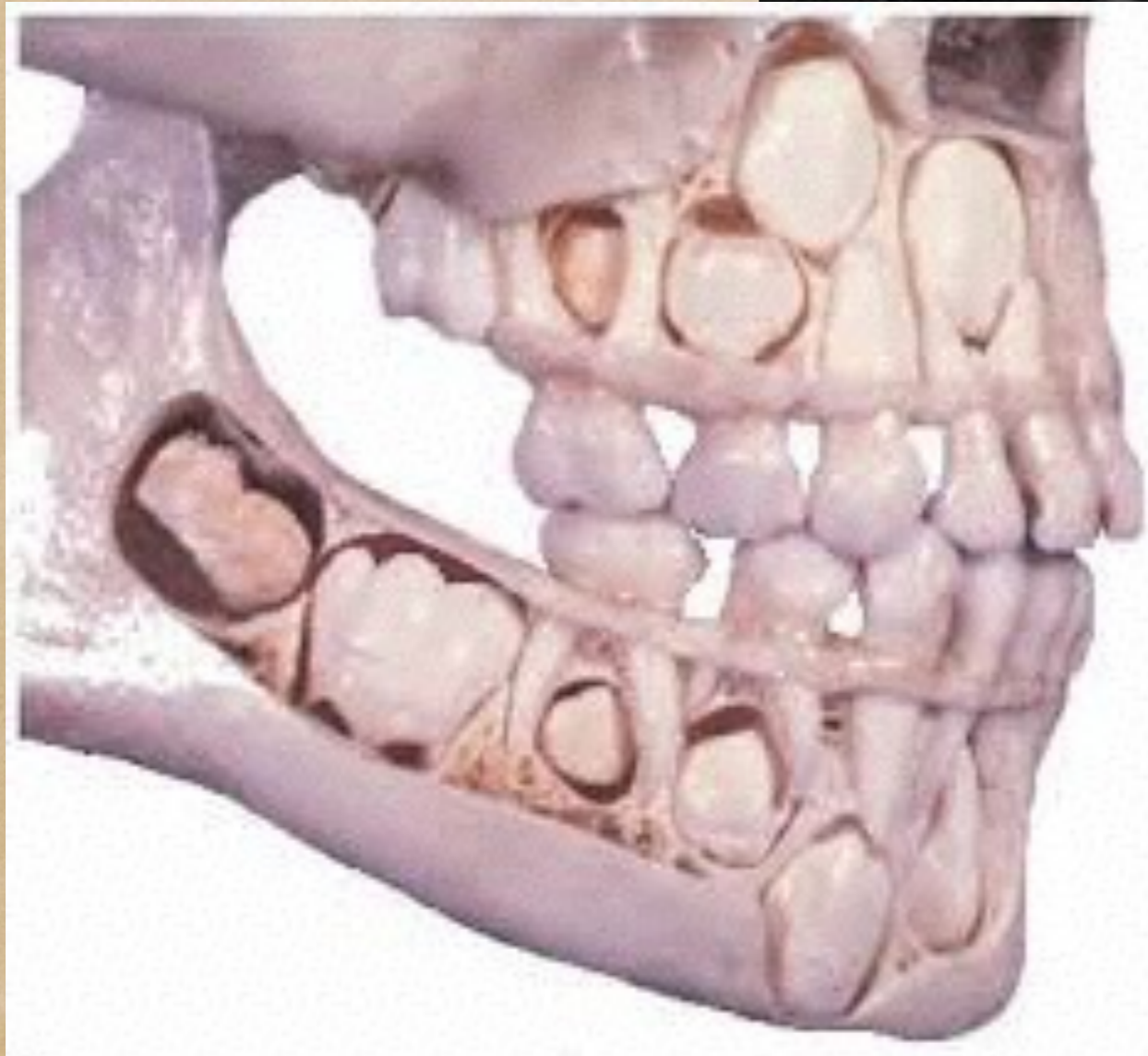
Symptoms During Teething

Numbered Gr...

	Cham.	Calc.	Kreos.	Acon.	Sil.	Bell.	Pod.	Phyt.	Kali-br.	Coff.	Rheum	Zinc.	Ip.	Nux-v.	Bor.	Cheir.	Calc-p.
Total	50	41	30	33	31	24	22	21	20	23	22	17	17	17	16	8	15
Rubrics	23	20	18	16	13	15	13	14	13	11	10	11	10	9	9	8	9
MIND; BITING; dentition, during (4)	1			1				1									
MIND; BITING; dentition, during; everything (1)	2																
MIND; CARRIED; desires to be; fast; dentition, during (1)																	
MIND; EXCITEMENT, excitable; tendency; dentition, during (5)	1			4		3				4					1		
MIND; EXCITEMENT, excitable; tendency; nervous; dentition, during (1)																	
MIND; FEAR; brain; irritation of, during dentition (1)																	
MIND; FEAR; children, in; night, pavor nocturnus; dentition, during (2)									3								
MIND; FEAR; strangers, of; dentition, during (1)																	
MIND; IRRITABILITY; dentition, during (21)	4	1	2	1		2	2		1		4	2		1			1
MIND; MOANING, groaning; tendency; dentition, in (3)	3						2	1									
MIND; MOROSE, sulky, cross, fretful, ill-humor, peevish; dentition, in (1)	3																
MIND; RESTLESSNESS, nervousness; tendency; night; dentition, during (1)																	
RESTLESSNESS, nervousness; tendency; children, in; dentition, during (5)			2	1							3						
MIND; RESTLESSNESS, nervousness; tendency; dentition, during (5)	2			4		3				4					2		
SHRIEKING, screaming, shouting; night; bronchitis, during dentition, in (1)			2														
MIND; SHRIEKING, screaming, shouting; dentition, during (5)			2								2						
SHRIEKING, screaming, shouting; dentition, during; drawing up limbs ... (1)											2						
MIND; SHRIEKING, screaming, shouting; fright, with; dentition, in (1)																	
MIND; SHRIEKING, screaming, shouting; sleep; during; dentition, in (1)																	
MIND; STARTING, startled; dentition, during (1)	1																
MIND; UNCONSCIOUSNESS, coma; convulsions; during; dentition, during (1)	2																
UNCONSCIOUSNESS, coma; falling, with; turns red suddenly, and falls, ... (1)				2													
WEEPING, tearful mood; tendency; children; in; dentition, from difficult (1)								2									
HEAD; CONGESTION, hyperemia etc.; Brain; dentition, during (1)																	
HEAD; IRRITATION of brain; dentition, during (2)																	
HEAD; ROLLING in; dentition, with difficult (1)							1										
HEAD PAIN; GENERAL; dentition, during (14)	2			2	1	1				1				1			1

Ear Pain





Tooth Development
In The Jaw

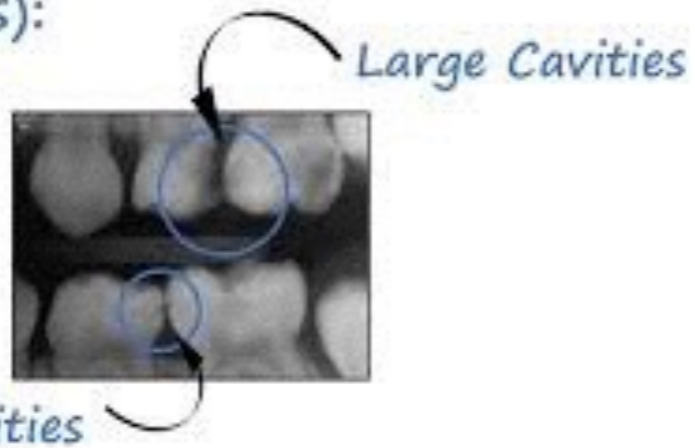
CAVITIES or CARIES



Radiographs (X-Rays):

X-rays check for cavities between teeth that are touching that cannot be visualized on an exam.

They can also detect infection around the tooth.

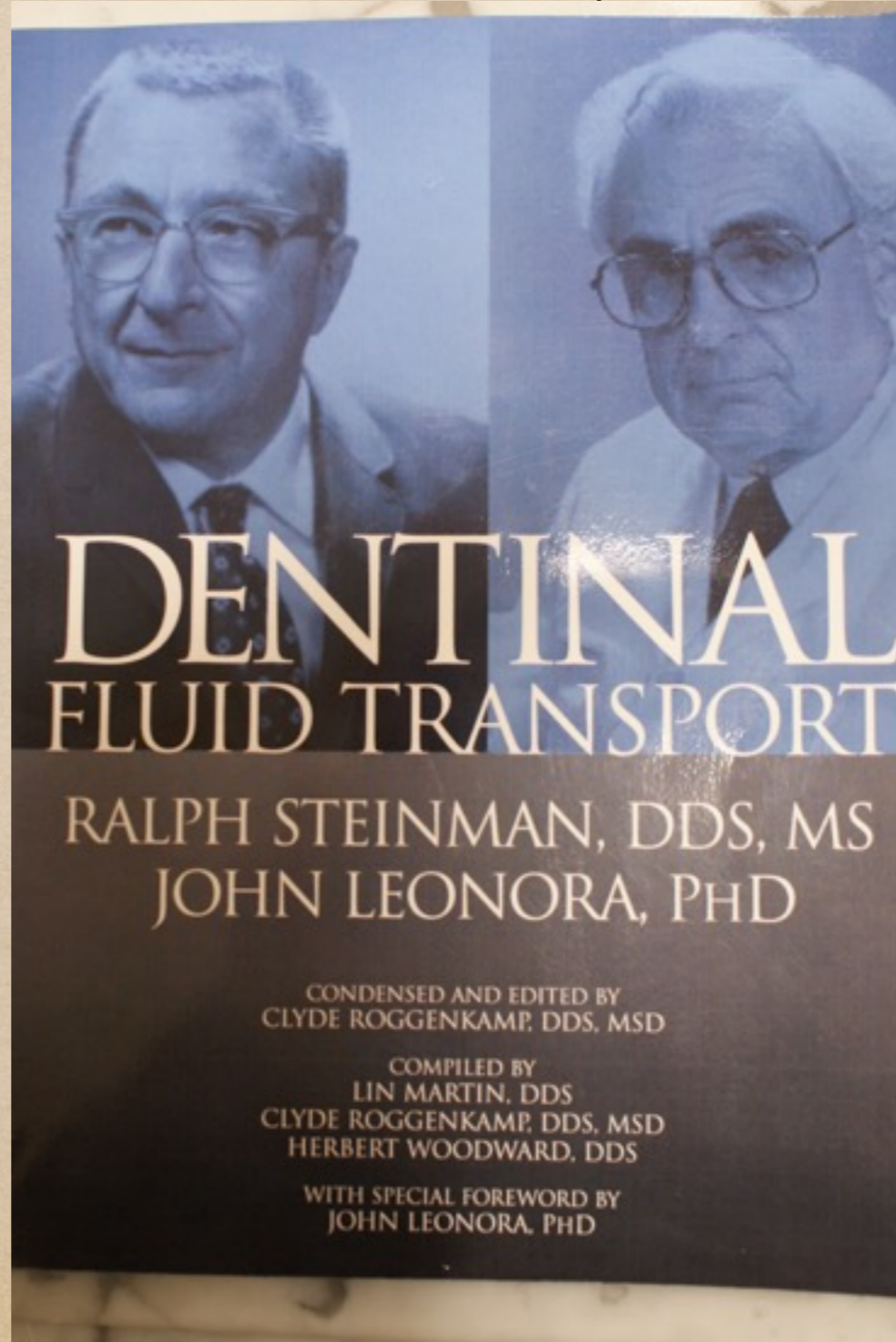


What Causes Cavities?



- * CARIES, decayed, hollow (101): abrot., acon., aloe, alum., alumn., am-c., ambr., anac., anan., ang., **Ant-c.**, ars., asar., aur., aur-ar., aur-s., bac., bar-c., **Bell.**, **Bor.**, bov., bry., cadm-s., calc., calc-f., calc-p., calc-s., calc-sil., carb-an., carb-v., carbn-s., carc., caust., cham., chin., clem., coca, cocc., coff., con., euph., **Fl-ac.**, glon., graph., hecla., hep., hyos., ip., kali-bi., kali-c., kali-i., kali-n., kali-p., kreos., lach., lob-s., lyc., mag-c., mag-m., mang., med., meph., **Merc.**, **Mez.**, naja, **Nat-c.**, nat-m., nat-p., nat-s., nit-ac., nux-v., ox-ac., par., petr., ph-ac., phos., plan., plat., **Pib.**, puls., rheum, rhod., rhus-t., ruta, sabad., sabin., sang., sel., **Sep.**, sil., spig., **Staph.**, sul-ac., sulph., syph., tab., tarax., thuj., tub., verat., zinc.
- appear, as soon as they (2): kreos., staph.
- diabetes, in (1): sul-ac.
- internal (1): sel.
- long, too, as if (1): hep.
- premature in children (**rapid**) (17): bac., calc., calc-f., calc-p., cocc., coff., fl-ac., hecla., **Kreos.**, lyc., merc., mez., phos., plan., sil., **Staph.**, tub.
- rapid (14): ars., bar-c., calc., calc-p., carb-v., **Fl-ac.**, med., merc., mez., nat-m., phos., plan., **Sep.**, syph.
- sensation of (2): asar., staph.
- crown, at (2): merc., staph.
- gums, at edge of (4): calc., sil., syph., thuj.
- roots, at (7): am-c., fl-ac., merc., mez., sil., syph., **Thuj.**
- molars, bicuspid, upper left (1): carb-an.
- * sides of teeth (4): bac., mez., staph., thuj.
- outside (1): bac.

Dentinal Fluid Transport; Ralph Steinman and John Leonora
Edited by Roggenkamp



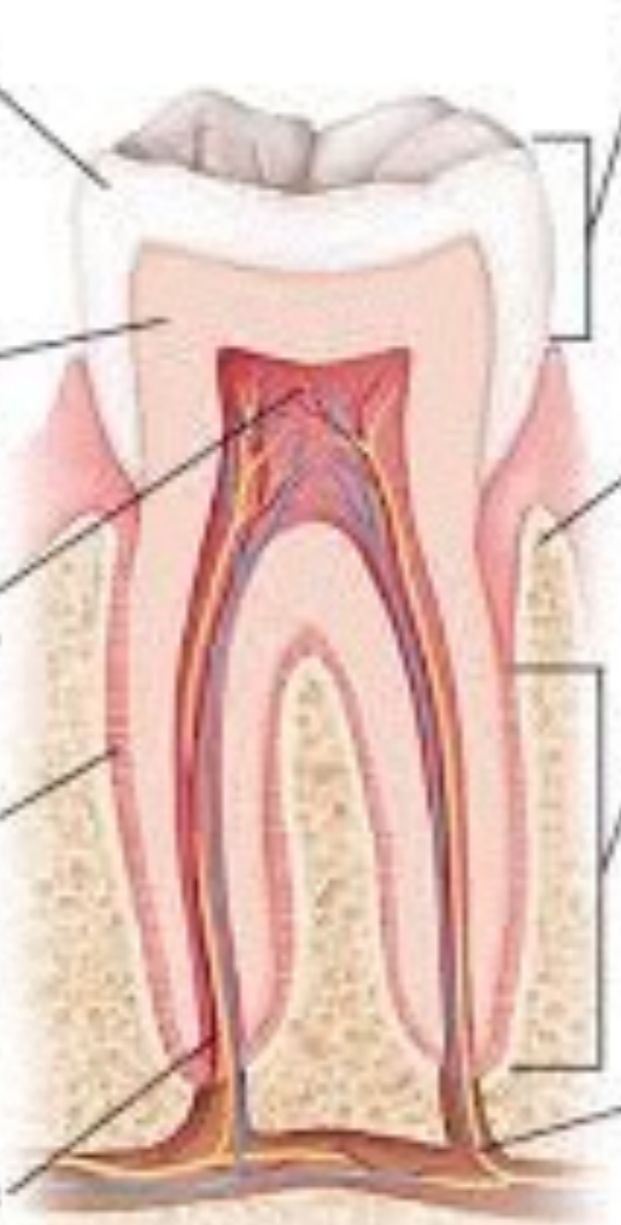
Enamel is a hard coating that protects the surface of the tooth.

Dentin is the middle layer of the tooth

The **pulp** is the soft inner tissue of the tooth.

Ligaments are tiny fibers of connective tissue that attach the root to the bone.

Blood vessels carry nutrients to the tooth.



The **crown** is the part of the tooth you can see. It has surfaces used for biting and chewing.

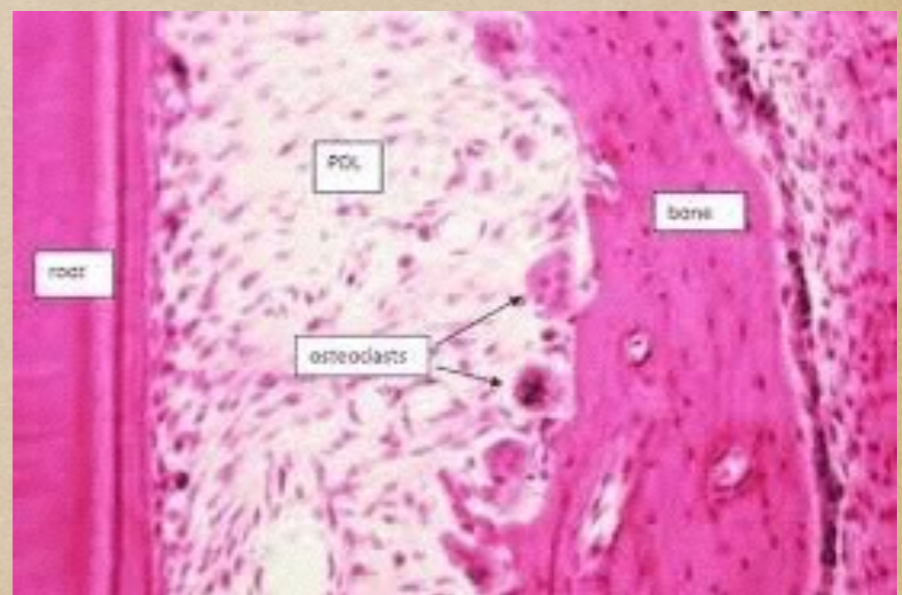
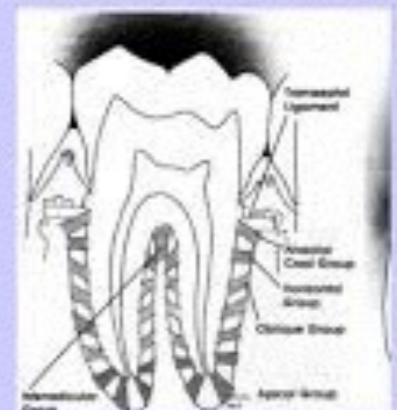
Bone in the jaw provides support and stability.

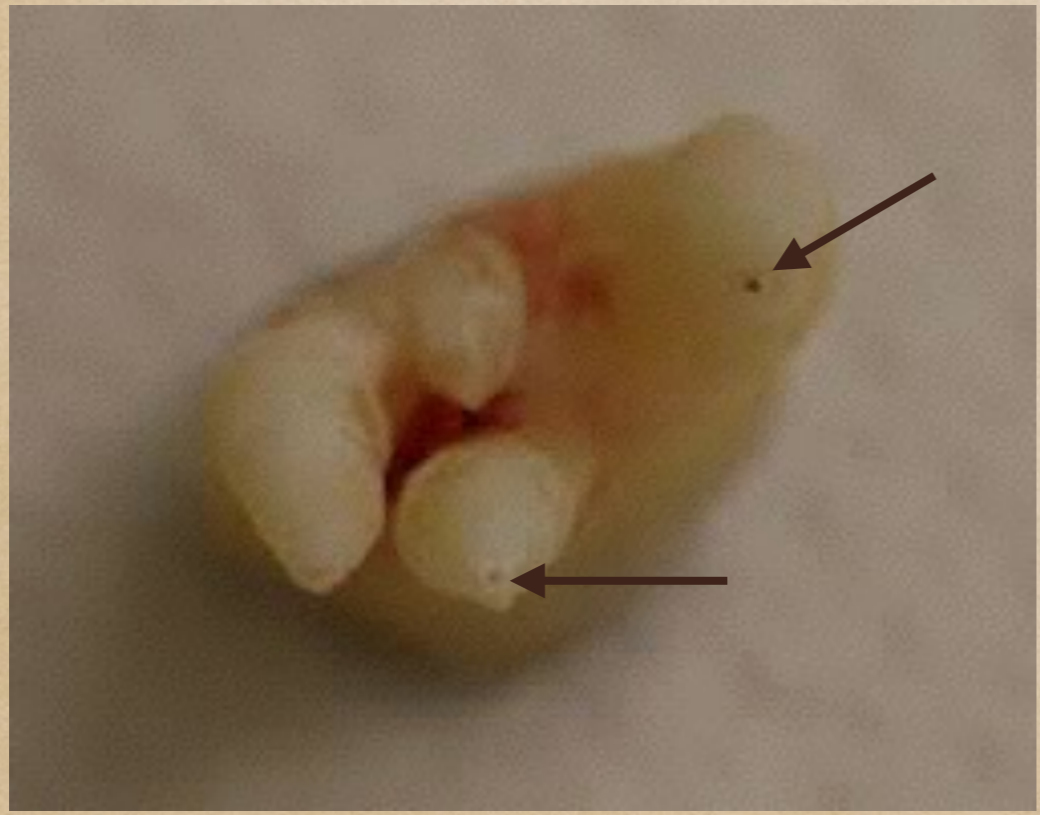
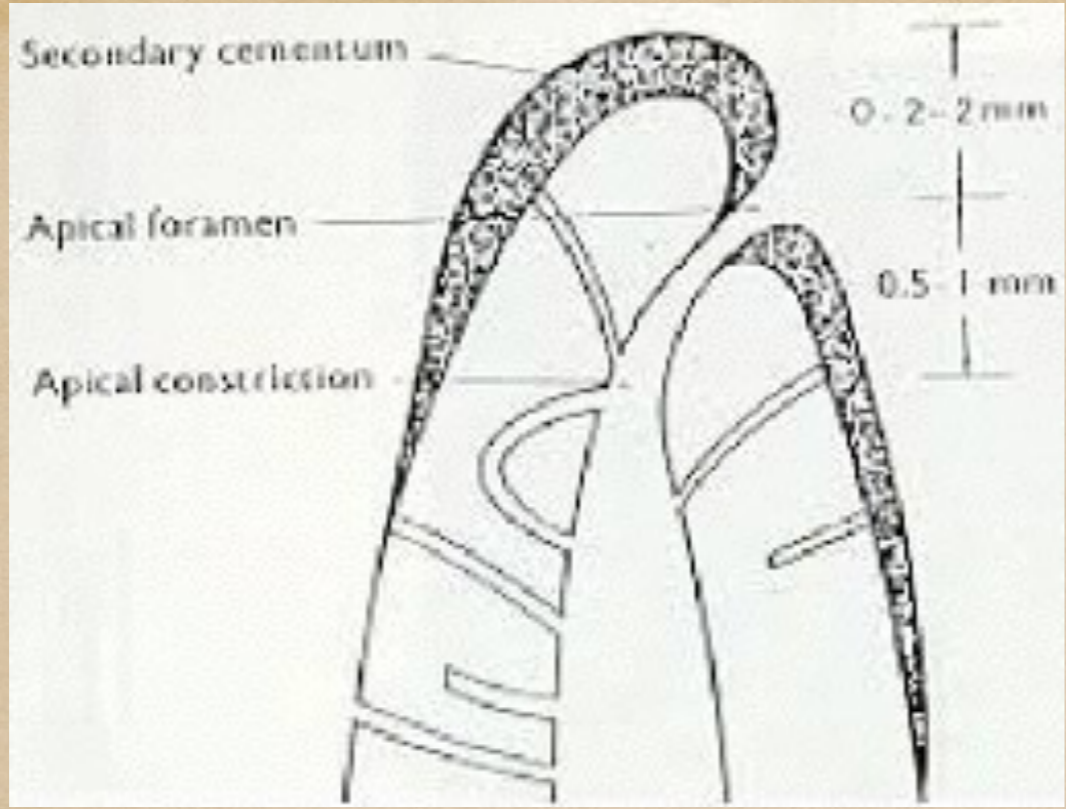
The **root** is the part of the tooth that is lodged in the supporting bone.

Nerves relay signals such as pain to and from the brain.

FIBERS OF PERIODONTAL LIGAMENT:

- 1 ALVEOLAR CRESTAL FIBERS
- 2 HORIZONTAL
- 3 OBLIQUE
- 4 APICAL
- 5 INTERRADICULAR





J.M. 29 y.o. male

September 14, 2000

The patient arrived complaining of pain in his lower left tooth which started 6 weeks ago. It had disappeared for a while but reappeared 2 days ago. He said he knows there is a cavity present and rates the pain level a 7. It is worse cold and motion (3). The pain comes on slowly and disappears slowly, it is a pounding pain. It is better massaging the gum area (1) and warm air (2), but worse warm drink. He said the tooth feels loose but objectively it is not loose, and it is percussion and palpation positive. A radiograph or X-ray of the left side shows deep decay very close or just into the pulp space of the second premolar. I told him he requires root canal therapy to save the tooth.

Prescription Staphysagria 1M

	Staph.	Sep.	Kali-c.	Puls.	Lach.	Nat-m.	Phos.	Merc.	Sulph.	Nux-v.	Rhus-t.	Cham.	Nit-ac.	Spig.	Chin.	Calc.
Total	15	15	14	13	13	12	12	12	12	11	11	11	11	10	9	10
Rubrics	8	7	7	7	6	7	7	6	6	6	6	5	6	7	5	5
tooth pain cold aggr (81)	3	3	3	1	2	3	2	2	2	2	3	2	2	2		2
TEETH; PAIN; General; motion; aggr. (14)	1		1					1		2				1	2	
GENERALITIES; PAIN; General; appear gradually; disappear gradually, and (56)	1	1		2	2	2	2		1				1	2		
TEETH; PAIN; pulsating (81)	2	3	2	2	3	2	1	2	3	1	2	3	2	2	3	2
TEETH; PAIN; General; pressure; amel. (38)	2	1	2	1		1	2				1				1	
tooth pain warm aggr (60)	1	3	3	3	3	2	2	2	2	2	1	3	2	1		3
TEETH; LOOSENESS of; sensation (64)	2	1	1	2	1	1	1	2	2	2	2	1	2	1	1	1
TEETH; CARIES, decayed, hollow (101)	3	3	2	2	2	1	2	3	2	2	2	2	2	1	2	2

September 15, 2002

He left a message saying he has no more pain and is doing fine.

September 28, 2002

He said he took the remedy only once in the office and as the day progressed the area improved until the pain was gone except for twice when he had some short lived discomfort. Even if food got into the cavity he said it was fine. Root canal procedure performed, the pulp was necrotic.

	Staph.	Sep.	Kali-c.	Puls.	Lach.	Nat-m.	Phos.	Merc.	Sulph.	Nux-v.	Rhus-t.	Cham.	Nit-ac.	Spig.	Chin.	Calc.
Total	15	15	14	13	13	12	12	12	12	11	11	11	11	10	9	10
Rubrics	8	7	7	7	6	7	7	6	6	6	6	5	6	7	5	5
tooth pain cold aggr (81)	3	3	3	1	2	3	2	2	2	2	3	2	2	2		2
TEETH; PAIN; General; motion; aggr. (14)	1		1					1		2				1	2	
GENERALITIES; PAIN; General; appear gradually; disappear gradually, and (56)	1	1		2	2	2	2		1				1	2		
TEETH; PAIN; pulsating (81)	2	3	2	2	3	2	1	2	3	1	2	3	2	2	3	2
TEETH; PAIN; General; pressure; amel. (38)	2	1	2	1		1	2				1				1	
tooth pain warm aggr (60)	1	3	3	3	3	2	2	2	2	2	1	3	2	1		3
TEETH; LOOSENESS of; sensation (64)	2	1	1	2	1	1	1	2	2	2	2	1	2	1	1	1
TEETH; CARIES, decayed, hollow (101)	3	3	2	2	2	1	2	3	2	2	2	2	2	1	2	2

	Staph.	Sep.	Kali-c.	Puls.	Lach.	Nat-m.	Phos.	Merc.	Sulph.	Nux-v.	Rhus-t.	Cham.	Nit-ac.	Spig.	Chin.	Calc.
Total	15	15	14	13	13	12	12	12	12	11	11	11	11	10	9	10
Rubrics	8	7	7	7	6	7	7	6	6	6	6	5	6	7	5	5
tooth pain cold aggr (81)	3	3	3	1	2	3	2	2	2	2	3	2	2	2		2
TEETH; PAIN; General; motion; aggr. (14)	1		1					1		2				1	2	
GENERALITIES; PAIN; General; appear gradually; disappear gradually, and (56)	1	1		2	2	2	2		1				1	2		
TEETH; PAIN; pulsating (81)	2	3	2													
TEETH; PAIN; General; pressure; amel. (38)	2	1	2													
tooth pain warm aggr (60)	1	3	3													
TEETH; LOOSENESS of; sensation (64)	2	1	1													
TEETH; CARIES, decayed, hollow (101)	3	3	2													

PAIN
General

TEETH

+ cold (0)

air (see air) (0)

+ anything (0)

agg. (61): agar., anan., androc., ant-c., arg-n., arist-cl., ars., asar., bar-c., bar-s., bov., calc., calc-p., calc-sil., carb-v., carbn-s., cast., coc-c., colch., con., grat., hed., hell., hep., itu, Kali-c., kali-i., kali-n., kali-p., lach., lyc., m-p-a., mag-c., mag-m., mag-p., mang., merc., merc-i-f., Nat-m., nit-ac., nux-m., nux-v., par., ph-ac., phos., plan., plb., psor., puls., rhod., Rhus-t., rob., sanic., Sep., sil., spig., staph., sul-ac., sulph., syph., thuj.

amel. (27): ambr., bell., bism., brom., bry., cadm-s., calc., caust., cham., chim., chin., clem., coff., ferr., ferr-p., glon., hist., mag-c., mag-m., merc., nat-s., nux-v., phos., puls., sep., staph., sulph.

+ drinks, from (0)

agg. (55): agar., anan., androc., Ant-c., arg-n., ars., bar-c., bar-s., bor., bry., calc., carb-an., carb-v., carbn-s., cast., caust., cench., cham., chin-ar., cina, coc-c., fl-ac., graph., gymn., Hep., kali-ar., Kali-c., kali-p., Lach., m-p-a., mag-p., mang., merc., mur-ac., Nat-m., nux-m., nux-v., phos., plan., puls., rhod., Rhus-t., rumx., sabad., sabin., sanic., sars., sel., sil., spig., Staph., sulph., ther., thuj., til.

amel. (9): bism., bry., chim., coff., ferr., ferr-p., lac-c., nat-s., puls.

* food, from (23): agar., androc., arist-cl., bov., bry., calc., carb-v., con., glon., graph., hell., lach., mag-p., merc., nux-v., par., plb., rhus-t., rob., sabad., sanic., staph., sulph.

drinks, not by (1): con.

from a (32): acon., bar-c., bell., bry., calc., camph., carb-v., caust., cham., chin., colch., dulc., gels., glon., grat., hyos., ign., kali-c., kali-p., merc., mez., nat-c., nit-ac., nux-m., nux-v., phos., puls., rhus-t., spig., staph., sul-ac., zinc.

hand applied amel. (3): ang., kali-p., rhus-t.

head, on (1): kali-c.

hot, or (2): carb-v., lach.

overheating, after (4): cham., glon., kali-c., rhus-t.

Spring, in, from a (1): puls.

+ water (0)

agg. (Sensitive; cold water, to) (1): mag-c.

amel. (33): aesc., all-c., ambr., ap-g., bell., bism., Bry., camph., caust., cham., chel., chim., clem., Coff., ferr., ferr-p., fl-ac., hydrog., lac-c., laur., mag-c., mag-m., merc., nat-s., nux-v., phos., Puls., rhus-t., rumx., sel., sep., sulph., thuj.

	Puls.	Bry.	Coff.	Rhus-t.	Staph.	Merc.	Calc.
Total	14	13	12	12	11	10	10
Rubrics	7	7	5	6	6	7	6
tooth pain cold amel (40)	3	3	3	1	1	1	1
TEETH; PAIN; General; cold; anything; amel. (27)	2	1	2		1	1	1
TEETH; PAIN; General; cold; water; amel. (33)	3	3	3	1		1	
TEETH; PAIN; General; cold; drinks, from; amel. (9)	2	2	2				
tooth pain cold aggr (96)	2	2	2	3	3	2	2
TEETH; PAIN; General; cold; anything; aggr. (61)	1			3	2	2	2
TEETH; PAIN; General; cold; drinks, from; aggr. (55)	1	1		3	3	2	2
TEETH; PAIN; General; cold; food, from (23)		1		1	1	1	2

+ warm (0)

+ drinks, from (0)

agg. (30): aesc., agn., all-c., am-c., am-m., bism., bry., carb-v., carb-n-s., cench., **Cham.**, **Coff.**, dros., eupi., ferr-p., fl-ac., **Lach.**, merc., mill., nat-s., nit-ac., ph-ac., plan., **Puls.**, rhus-t., sabad., **Sep.**, sil., syph., trom.

amel. (15): ars., bry., cast., lyc., mag-p., nux-m., nux-v., puls., rhus-t., sang., sil., staph., sul-ac., sulph., trom.

+ food, from (0)

agg. (31): agn., ambr., bar-c., bell., bism., bry., calc., carb-v., carb-n-s., caust., **Cham.**, clem., coff., graph., guare., hell., **Kali-c.**, m-arct., m-aust., mag-s., merc., nat-m., nux-v., par., ph-ac., phos., **Puls.**, rhod., sabad., sep., sil.

amel. (1): arist-cl.

+ things (0)

agg. (43): agn., am-c., ambr., anac., bar-c., bar-s., bry., **Calc.**, calc-p., carb-v., carb-n-s., **Cham.**, chel., clem., **Coff.**, colch., ferr-p., glon., graph., hell., **Kali-c.**, lach., lachn., m-arct., m-aust., mag-m., mag-s., merc., mill., nat-m., nat-s., nit-ac., par., ph-ac., phos., plan., prun., **Puls.**, sep., sil., spig., staph., sulph.

amel. (16): bov., calc., calc-sil., com., kali-i., lyc., mag-p., mur-ac., nit-ac., nux-m., nux-v., psor., rhod., rhus-t., sil., sul-ac.

+ warmth (0)

+ bed, of (0)

agg. (17): ant-c., bell., bry., **Cham.**, chel., clem., graph., jug-r., led., mag-c., **Merc.**, ph-ac., phos., **Puls.**, rhod., sabin., sulph.

amel. (6): lyc., mag-s., nux-v., sil., spig., vinc.

+ external (0)

agg. (29): all-c., ambr., am., bry., carb-v., carb-n-s., cham., chel., **Coff.**, cor-r., ferr., ferr-p., graph., hed., hell., hep., lach., mag-c., mag-s., merc., nux-m., ph-ac., phos., plan., prun., **Puls.**, sabin., sep., sulph.

* amel. (36): am-c., androc., arg-n., ars., ars-h., bac., bov., calc., calc-sil., cast., chin., com., kali-ar., kali-c., lach., lyc., mag-m., **Mag-p.**, **Merc.**, mur-ac., nat-ar., nat-c., nat-p., nat-sil., **Nux-m.**, **Nux-v.**, phos., psor., puls., **Rhod.**, **Rhus-t.**, sabad., sang., sil., staph., sul-ac.

wrapping up head (4): bac., **Nux-v.**, phos., **Sil.**

+ room, of (0)

* agg. (23): all-c., ant-c., apis, bry., cham., ham., helon., hep., iris, kali-s., mag-c., mag-s., merc., nat-c., nicc., nux-v., ph-ac., **Puls.**, rhod., sep., spig., sulph., thuj.

entering, on (1): mag-s.

amel. (5): ars., nux-v., phel., phos., sulph.

unhappy woman in (1) phos.



▼ PAIN
General

+ motion (0)

agg. (14): bry., chel., chin., clem., coff., daph., hyper., kali-c., merc., mez., nux-v., sabin., spig., staph.

amel. (4): mag-c., phos., puls., rhus-t.

mouth open, sucking on enamel (1): mer.



▼ PAIN
General

jarring agg. (2): nux-m., ozone



+ JAR, stepping (0)

* agg. (111): acon., aloe, alum., alum-p., alum-sil., am-c., ambr., anac., anq., ant-c., arg., arg-n., **Arn.**, ars., asar., bapt., bar-c., **Bell.**, berb., bor., **Bry.**, cact., calad., calc., calc-p., calc-sil., camph., canth., carb-ac., carb-s., caust., cham., chel., chin., **Cic.**, cina, cocc., coff., **Con.**, crot-h., dros., dulc., euphr., ferr., ferr-ar., ferr-p., form., glon., graph., ham., hell., hep., ign., kali-c., kali-i., kali-n., kali-sil., lac-c., **Lach.**, led., lil-t., lyc., lycpr., m-p-a., mag-c., mag-m., mang., meny., merc., nat-ar., nat-c., nat-m., nat-p., nat-s., nat-sil., **Nit-ac.**, nux-m., nux-v., onos., par., petr., ph-ac., phos., plat., plb., podo., puls., rhod., **Rhus-t.**, ruta, sabad., sabin., sang., sanic., sec., seneg., sep., **Sil.**, spig., spong., stann., staph., sulph., tab., tarax., **Ther.**, thuj., valer., verb., vib., viol-t.

sidewise (1): caust.

sudden (1): vib.

amel. (5): ars., caps., gels., hell., nit-ac.



PAIN General

GENERALITIES

- * appear gradually (69): acon., all-s., arg., arg-n., arn., ars., bar-c., bell., bry., bufo, cact., calc-sil., carbn-o., cast., caust., chel., chin., coloc., con., crot-h., epip., euphr., form., gels., glon., ictod., ign., jab., kali-bi., kalm., lach., lact., lam., led., lob., lol., mez., nat-m., nit-ac., nux-m., op., pall., phos., phyt., pic-ac., plat., psil., psor., puls., rad-br., rhus-t., sabal., sabin., sang., sars., sel., sep., spig., stann., staph., stront-c., stroph., sul-ac., sulph., syph., tell., valer., verb., xan.
- disappear gradually, and (56): acon., all-s., **Arg-n.**, arn., ars., bar-c., bufo, cact., cast., chel., coloc., crot-h., epip., euphr., form., gels., glon., ictod., ign., jab., kali-bi., kalm., lach., lam., led., lol., mez., nat-m., nit-ac., nux-m., op., pall., phos., phyt., pic-ac., **Plat.**, psor., puls., sabal., sabin., **Sang.**, sars., sel., sep., spig., **Stann.**, staph., stront-c., stroph., sul-ac., sulph., syph., tell., valer., verb., xan.
- disappear suddenly, and (10): arg., arg-n., bell., caust., ign., psil., puls., rad-br., rhus-t., sul-ac.
- * appear suddenly (100): acon., agar., am-c., anh., arg., arg-n., ars., asaf., aster., atro., bamb-a., bar-acet., **Bell.**, berb., bor., both-a., buni-o., cact., calc., camph., canth., carb-ac., carbn-s., caust., cham., cemic., cob-n., coff., coloc., croc., crot-h., cupr., cupr-ar., daph., dios., eup-per., eup-pur., ferr., fl-ac., form., glon., hecla., hyper., ictod., ign., iris, kali-bi., kalm., lach., lob., lyc., mag-c., mag-p., med., merc-c., mez., morph., nat-f., nat-s., **Nit-ac.**, nux-m., nux-v., ovi-g-p., ox-ac., oxyt., petr., phys., phyt., plb., podo., puls., rad-br., ran-b., ran-s., rhus-t., sabin., sang., sep., sil., spig., stann., stel., stry., stry-p., sul-ac., sulph., tab., tarent., tell., thal., thala., thuj., tub., valer., verat., verb., vip., xan., zinc., zinc-val.
- * disappear suddenly, and (49): arg-n., asaf., aster., bamb-a., **Bell.**, bor., cact., canth., carb-ac., carbn-s., cham., coff., coloc., crot-h., cupr., dios., eup-per., eup-pur., fl-ac., hecla., ictod., ign., iris, **Kali-bi.**, kalm., lob., lyc., mag-p., med., merc-c., nat-f., **Nit-ac.**, nux-m., ovi-g-p., oxyt., petr., phyt., puls., rhus-t., sabin., spig., stry., sulph., tell., thal., thuj., tub., valer., verat.
- tension acutely increases, leaves with a snap on first motion (2): puls., rhus-t.
- disappear gradually, and (17): asaf., bell., buni-o., calc., coloc., fl-ac., hyper., ign., lach., med., puls., rad-br., ran-s., sabin., sep., sul-ac., xan.



TEETH

LOOSENESS of

- * sensation (falling out; sensation) (64): acon., alum., am-c., arn., ars., aur., bar-c., bism., bry., calc., calc-f., camph., carb-an., carb-v., caust., cham., chin., cocc., com., con., cop., erech., graph., hep., hist., hyos., ign., kali-c., lach., lachn., lith-c., lyc., mag-c., merc., merc-c., nat-m., nicc., nit-ac., nux-m., nux-v., olnd., op., ozone, phos., plan., plat., plb., puls., rhus-t., sabin., sang., sec., sep., sil., spig., spong., stann., staph., sulph., syph., tarent., tub., verat., zinc.

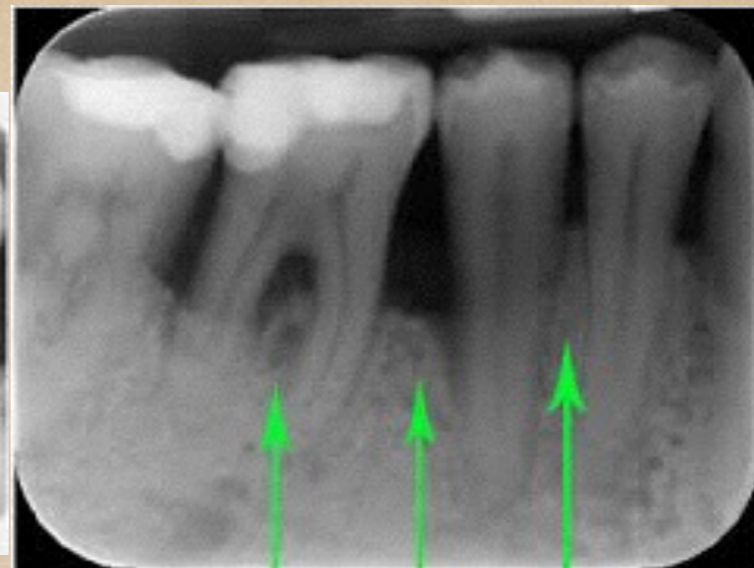
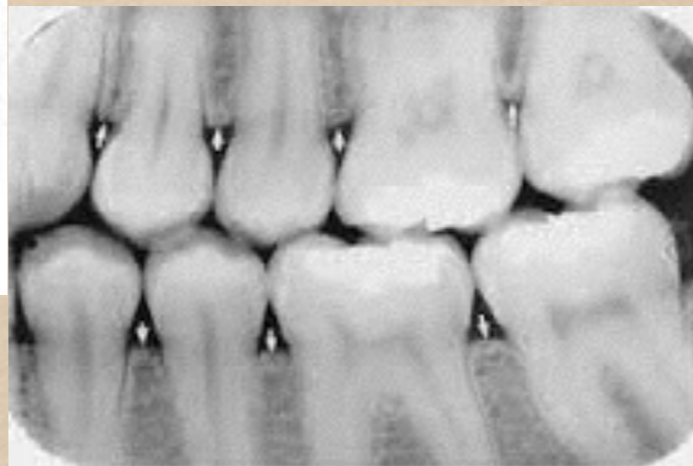


Tooth looks fine to the naked eye.

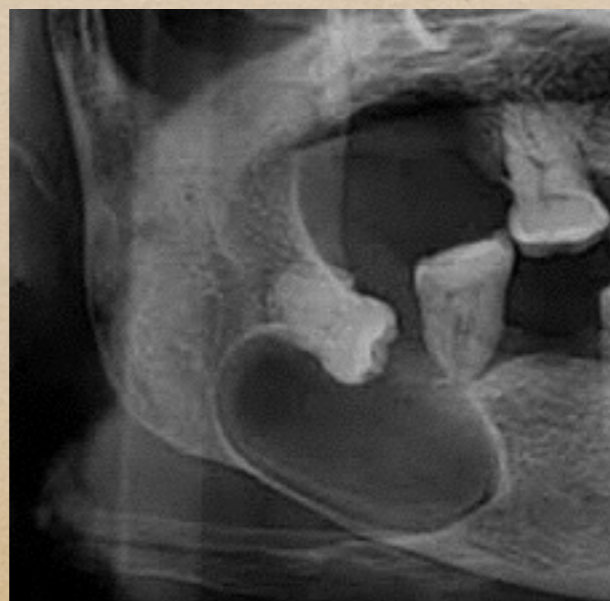


But an xRay reveals the decay.

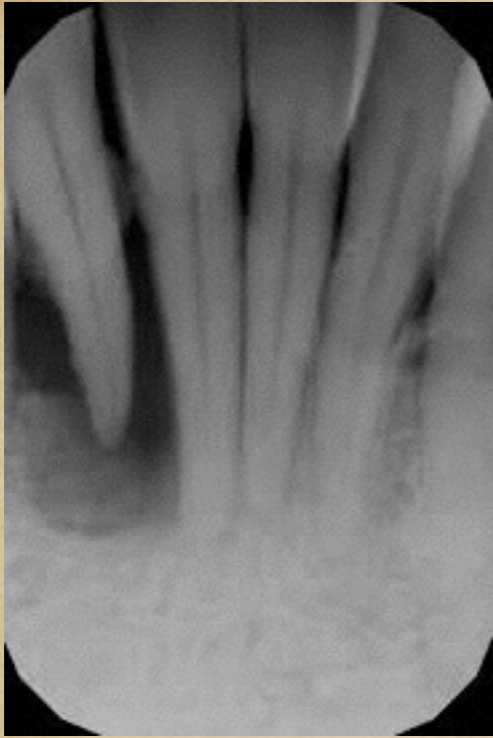
X-RAYS



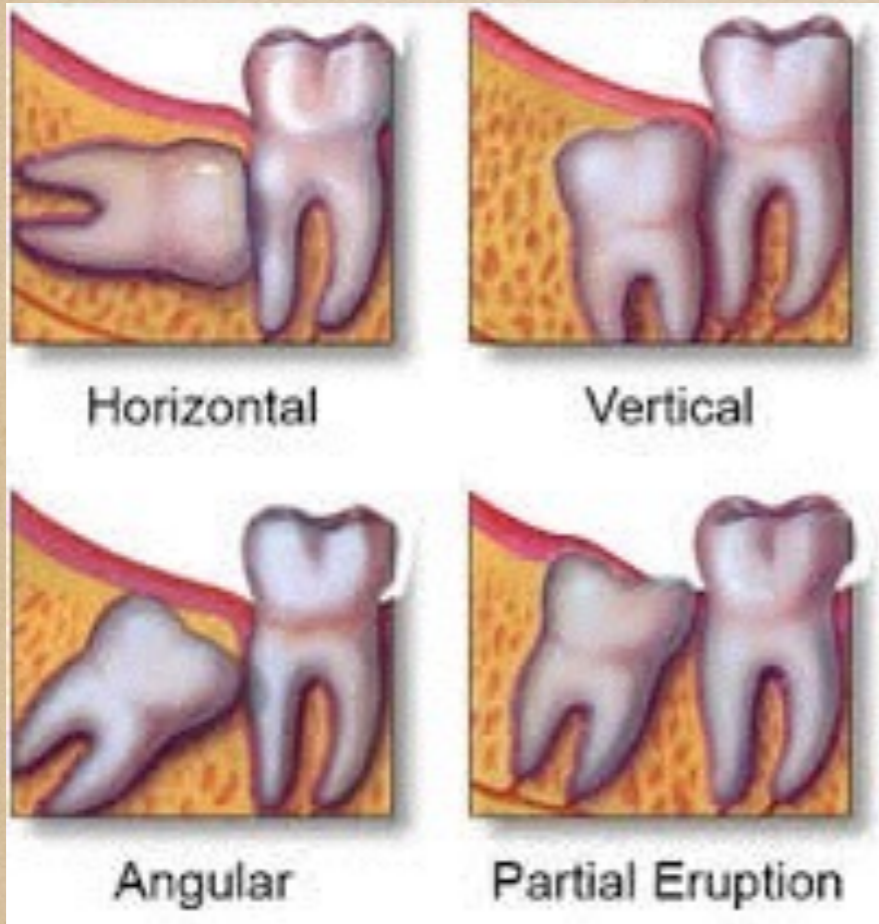
Impacted wisdom teeth



EXTRACTIONS



EXTRACTIONS



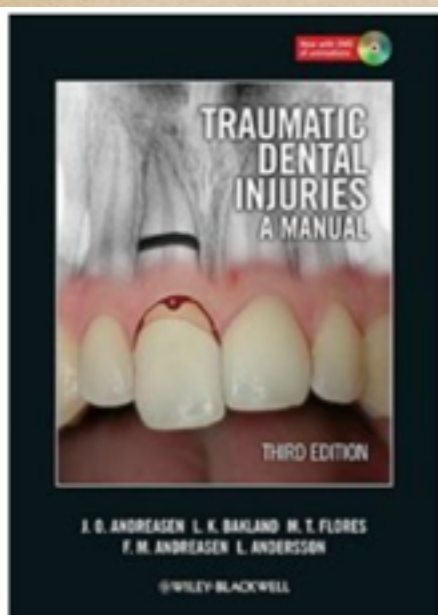
Protocol For Tooth Extraction

- 1) Repeat Arnica 200 every hour after extraction until the freezing is gone
- 2) Then do not repeat unless the patient feels it is necessary.
- 3) If necessary start once again, one pellet every hour until area settles
- 4) Regardless of how area feels repeat remedy before bed
- 5) Repeat remedy on waking and then as necessary throughout the day, up to four times a day, based on discomfort
- 6) If remedy is not bringing relief then take history and find a more appropriate remedy

Dental
Scenariós

- 1) Puncture wounds from anaesthetic - Ledum 200 - one dose every hour starting 3-4 hours before appointment - only if someone suffers after receiving the injection
- 2) For the tendency to gag, take either Aconite 200 or Agaricus 200 one dose each hour starting 3-4 hours before appointment - some people recommend alternating the remedies
- 3) Take Chamomilla 200 before an appointment, one dose each hour starting 3-4 hours before to intensify the effects of freezing
Take Chamomilla 200 each half hour after the appointment to reduce the time numbness is felt
- 4) Some patient have concern that Silica will cause their fillings to fall out. This does not occur.
- 5) For managing the anxious child dental patient alternate Aconite 200 with Chamomilla 200 every hour starting 3-4 hours before the appointment
- 6) Never change remedies as long as improvement is occurring

INJURIES TO TEETH



TRAUMATIC DENTAL INJURIES: A MANUAL

Paperback | April 25, 2011

by **Jens O. Andreasen, Leif K. Bakland, Maria Teresa Flores**

★★★★★ not yet rated | [write a review](#)

The third edition of Traumatic Dental Injuries: A Manual builds on the widespread success of the previous two editions. The ultimate guide to dental trauma, the manual preserves its uniquely usable and reader-friendly format,



INJURIES TO TEETH



INJURIES TO TEETH



Thank You
Wishing Everyone All
The Best For The
New Year